

**HOUSES<sup>®</sup>STYLE**

# kitchens + bathrooms

ISSUE 04 **\$9.95**

**148 pages of  
original ideas**

FROM AUSTRALIA'S LEADING  
ARCHITECTS AND DESIGNERS  
**PLANS INCLUDED**

**DESIGN FORECASTS FOR  
THE SAVVY HOME OWNER**

**SHOWCASE:** TAPS, BASINS + SURFACES THAT SIZZLE AND GLEAM

**COLOURED IMPRESSIONS**

**16 EXTRAORDINARY PROJECTS THAT KINDLE THE IMAGINATION**



# EDGE TENSION

Architect Vladimir Ivanov highlights the facets and folded edges of a suburban Sydney kitchen.

Story by Peter Davies Photography by Charmaine Pang





**IT'S THE STAIRCASE** that you notice first – a playful, sculptural block of zigzagging 10 mm folded steel plate that cranks through the living space around a core of warm timber veneer. At its base, a concrete plinth extends, turning a corner to become a day bed.

Architect Vladimir Ivanov applies this same honed sensibility to the kitchen. Here, a folded sheet of Corian drapes over the central island bench. A strip of wenge veneer traces its angular shape. Storage abounds, concealed behind a modular array of polyurethane-finished cupboards in off-white. The only exception to this muted palette is the block of Zebrano-veneer cupboards above the cook surface – which ties back to the similarly clad block at the centre of the stair.

A key objective of this alts-and-adds project in Sydney's North Turrumurra was to reconfigure the individual kitchen and bathroom of the existing residence into a light-filled and more open space. To capture light from the north, Vladimir has implemented an unexpected but entirely practical gesture – a clear glass splashback that frames a neat square of the garden beyond. Above, a lean highlight window bounces light off the ceiling.

With the kitchen so intimately connected to the house's living areas, Vladimir was keen to create a seamless transition from cooking to dining. The materials and colour palette are consistent from one space to the other, with a single step up and a shift from timber flooring to white epoxy delineating the galley-style kitchen.

Though the kitchen and laundry layout were reconfigured completely, the new bathroom was installed within the confines of its predecessor – albeit rearranged to make better use of the space. It is long and narrow, culminating in an inset tub positioned beneath a high slot window. Finishes are all creamy white, offset by a controlled sweep of Zebrano veneer on the cupboard fronts that links to the kitchen joinery.

To ameliorate any risk of the bathroom feeling poky, a generous plane of mirror and large-scale tiles – off-white on the walls, dark grey Pietra Medicea stone on the floor – redress the volume's compact proportions. **K+B**

**ARCHITECT**  
Vladimir N. Ivanov Architects  
123 Commonwealth Street  
Surry Hills NSW 2010  
Tel: +612 9212 1796  
Fax: +612 9211 0366  
Email: vlad@vniarchitects.com.au  
Web: www.vniarchitects.com.au

**PRACTICE PROFILE**  
This award-winning practice produces modern and highly detailed architecture and interior design.

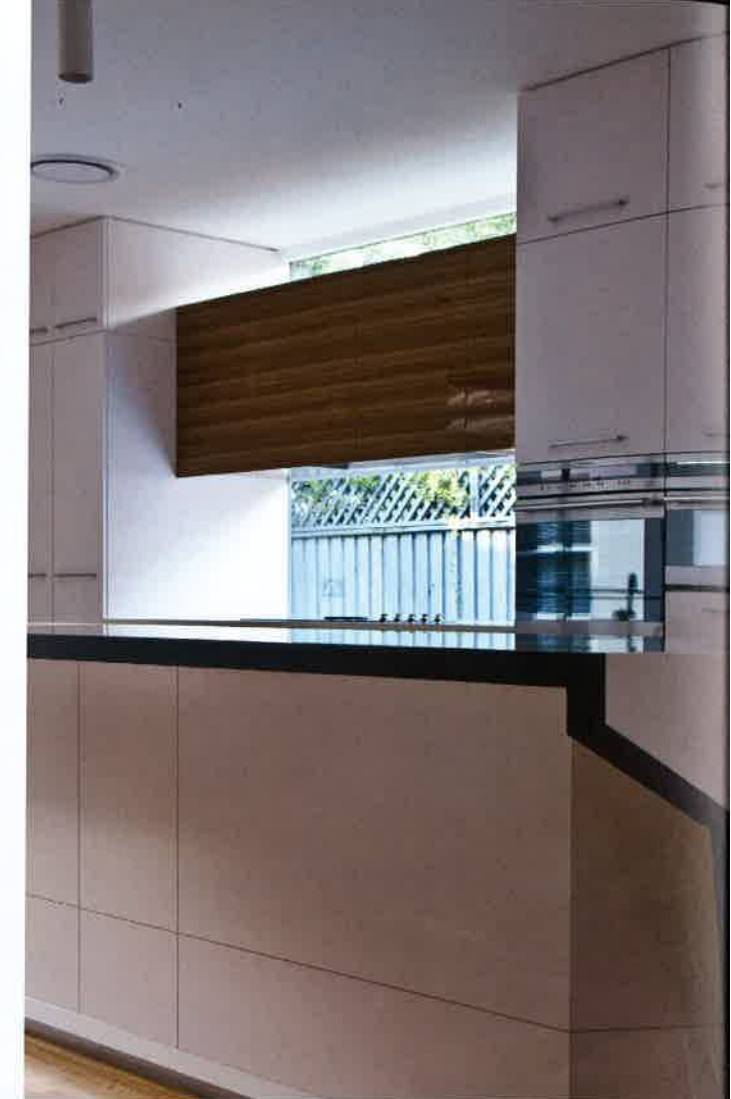
**PROJECT TEAM**  
Vladimir Ivanov

**BUILDER**  
Paul King Pty Ltd

**JOINER**  
SWD Detailed Joinery

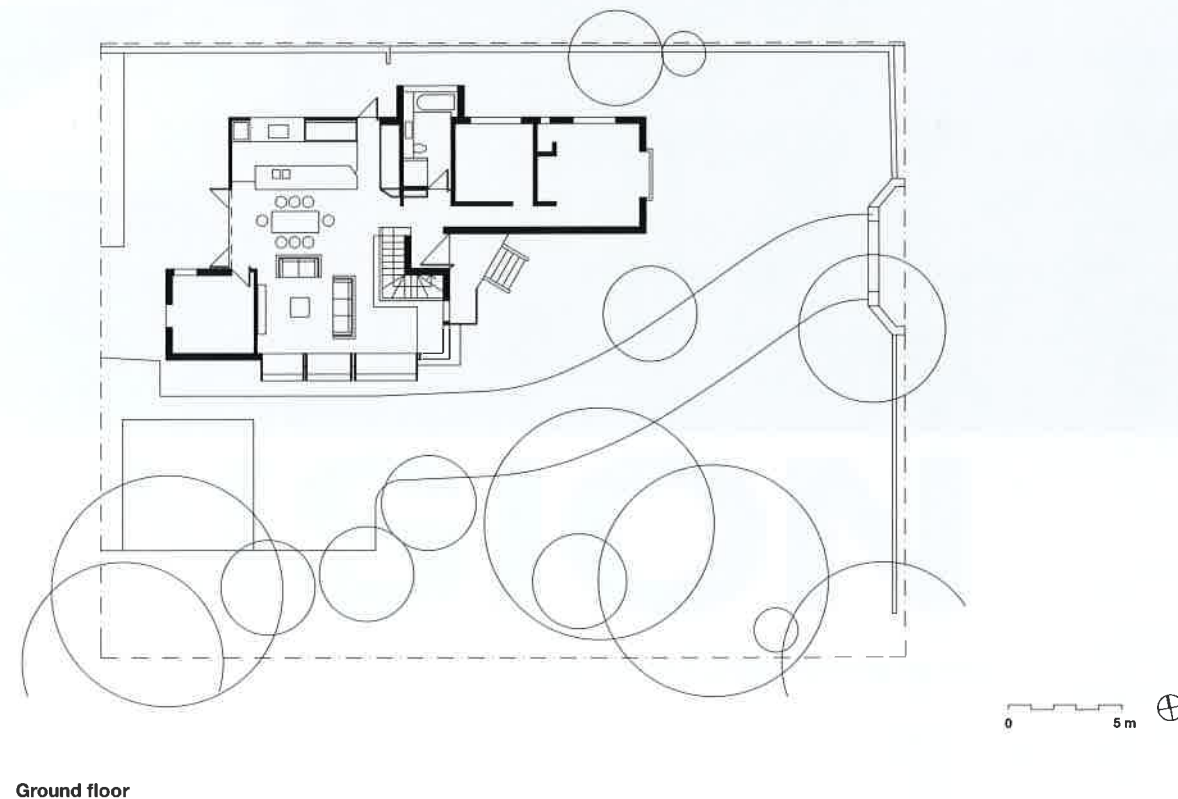
**CONSULTANTS**  
Engineer Partridge Partners  
Interiors VNI Architects  
Lighting Euro luce and JSB Lighting

**TIME SCHEDULE**  
Design, documentation  
6 months  
Construction 8 months

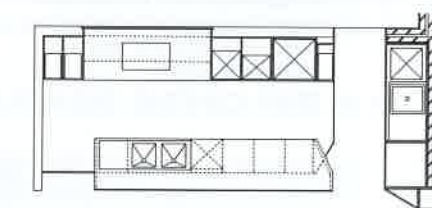


**A key objective was to reconfigure the individual kitchen and bathroom of the existing**

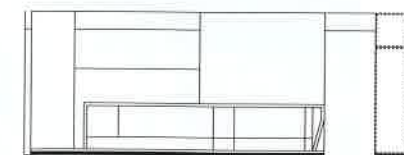
**residence into a light-filled and more open space.**



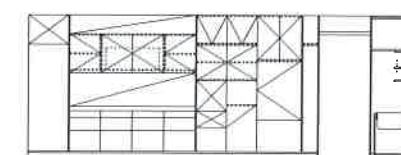
Ground floor



Kitchen plan



Island bench elevation



Kitchen elevation

**PREVIOUS PAGES:** Steel plate is folded into a snail-like central stair, which looks like a friendly crocodile. Underneath, a concrete ledge cantilevers over the floorboards. **THIS PAGE, LEFT:** A sheet of Corian drapes from the kitchen island like a cooked lasagne sheet. **THIS PAGE, RIGHT:** Clear glass reaches from the bench to ceiling and performs double duty as a splashback and light source for cooking.



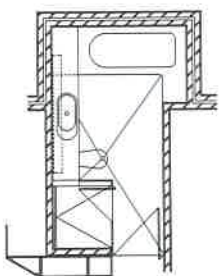
#### PRODUCTS KITCHEN

**Flooring** Braemar Floor Protection white BASF epoxy **Joinery** Corian 'Cameo White' benchtop; Dulux 'Pink Violet' glass polyurethane on door and drawer faces; New Age Veneers 'Zebrano' gloss overhead cupboards; Toughened glass splashback; Blum hardware **Lighting** Modus Tubo 270 mm light fitting from JSB **Sinks and tapware** Vola KV1 chrome finish tap from Candana Design; Corian 'Cameo White' integrated sinks **Appliances** Smeg PGFA95FX flush-mounted cooktop; Electrolux EUJEE63AS oven; Electrolux EMS2688X microwave; Qasair UV 1000-2 back-ducted rangehood; Fisher & Paykel E522B fully integrated refrigerator; Miele G 2270 SCVi fully integrated dishwasher **Windows** Skyrange Windows steel framed doors

#### PRODUCTS BATHROOM

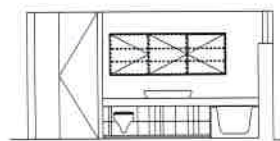
**Flooring** The Rock Masonry Pietra Medicea 600 mm x 300 mm stone tiles; DEVI Deviflex underfloor heating **Joinery** Corian 'Cameo White' vanity top and bath top; New Age Veneers 'Zebrano' 25% gloss on vanity joinery **Lighting** Modus Tubo 270 mm light fitting from JSB **Tapware and fittings** Vola KV1 chrome finish tapware; Vola BK6 chrome finish bath tapset, shower rose and tapset; Vola 791 chrome finish soap holder; Vola T12BP chrome finish toilet roll holder all from Candana Design; Madinox MDZ towel rails from Style Finish **Sanitaryware** Rogerseller C3 vanity; Villeroy & Boch wall-hung Norina pan with soft-close seat; Geberit concealed-cistern with top access panel and cistern buttons from Candana Design; Saniform Plus Kaidewei bath from Bright Water **Bathware** **Doors and windows** Skyrange Windows steel framed doors

**LEFT: A wall-length mirror with integrated light slot creates the illusion of space in an otherwise modestly proportioned bathroom. Large-scale off-white tiles continue the effect.**



0 2 m

Bathroom plan



Bathroom vanity elevation